



TOKYOSTAY

NICE GUESTHOUSE WITH THREE STATIONS NEARBY - Ikebukuro, Shinamachi & Mejiro !

OUR HOUSES



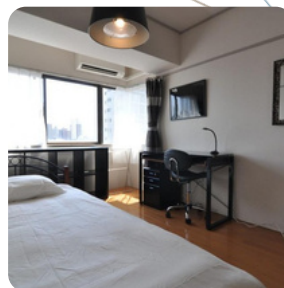
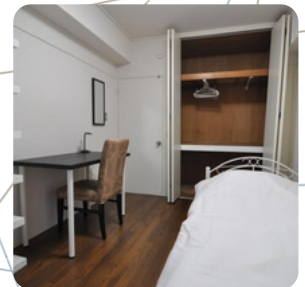
GUEST HOUSE

- 3LDK
 - Room Area: 8.29~9.95m²
 - quiet place
- Capacity for 3 people



EQUIPMENT

- Internet, water, gas, electricity included.
- Bedding, washing machine, kitchen utensils, refrigerator, rice cooker, kettle, hairdryer, towels, soap, hob included.
- Air conditioning and heating.



LOCALISATION

1-9-14, Minami-Nagasaki, Toshima-ku, Tokyo

INTERESTED IN OUR APARTMENTS?

Do not hesitate to contact us

03-5980-9621



tokyostay.co.jp@gmail.com



<https://www.facebook.com/tokyo.stay.1>



ACCESS

- Seibu Ikebukuro Line
Shiinamachi Station: 2 min walk

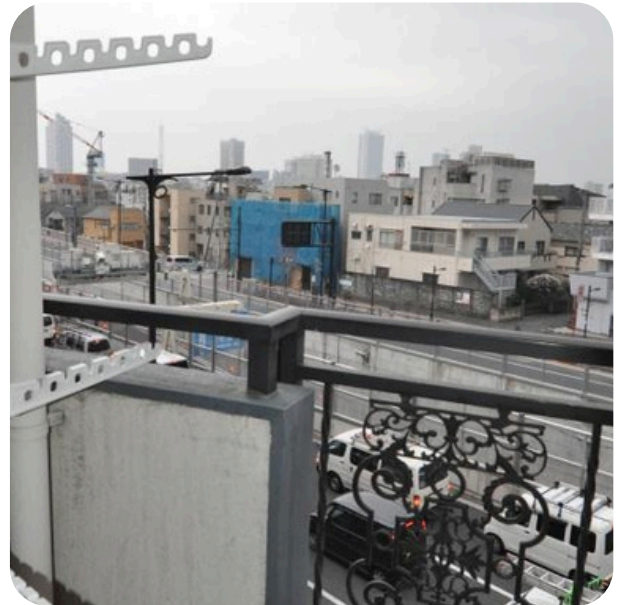


BENEFITS

- Competitive rates: more affordable than hotels or Airbnb.
- No agent fees or commissions.
- No contract fees for short stay.
- No insurance costs.
- Secure Apartment
- Free bike rental
- Luggage storage
- English and Japanese support
- Responsive staff.

Sharing (Public Usage)

- Kitchen
- Bath/Shower Room
- Washroom
- Dining Table
- TV
- Washing Machine
- Internet (Wireless)



LOCALISATION

1-9-14, Minami-Nagasaki, Toshima-ku, Tokyo

INTERESTED IN OUR APARTMENTS?

Do not hesitate to contact us

 **03-5980-9621**



tokyostay.co.jp@gmail.com



<https://www.facebook.com/tokyo.stay.1>



Room Description

- Bedding
- Closet
- Air Conditioner
- Desk • Chair



LOCALISATION

1-9-14, Minami-Nagasaki, Toshima-ku, Tokyo

INTERESTED IN OUR APARTMENTS?

Do not hesitate to contact us

 03-5980-9621