



TOKYOSTAY

COMFORTABLE AND VERY QUIET AREA

OUR HOUSES



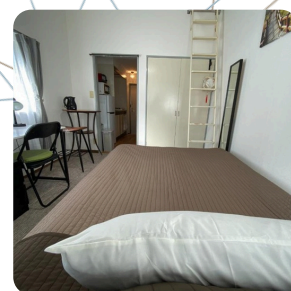
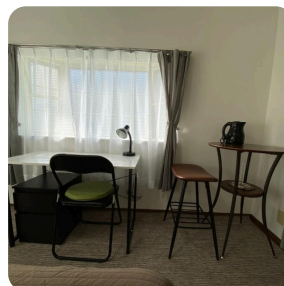
APARTMENTS

- 1K
 - Room Area: 18.75~18.75m²
 - 2nd floor
 - quiet place
- Capacity for 2 people



EQUIPMENT

- Internet, water, gas, electricity included.
- Bedding, washing machine, kitchen utensils, refrigerator, rice cooker, kettle, hairdryer, towels, soap, hob included.
- Air conditioning and heating.
- Loft on the second floor



LOCALISATION

2-24-4 Kaname-cho, Toshima-ku

INTERESTED IN OUR APARTMENTS?

Do not hesitate to contact us

03-5980-9621



tokyostay.co.jp@gmail.com

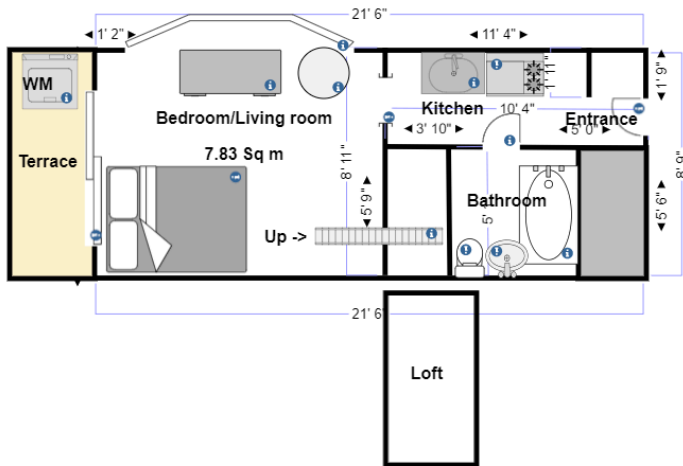


<https://www.facebook.com/tokyo.stay.1>



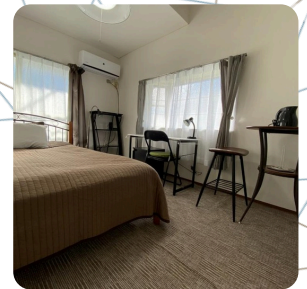
ACCESS

- Fukutoshin Line Kanamecho Station: 7 minute walk



BENEFITS

- Competitive rates: more affordable than hotels or Airbnb.
- No agent fees or commissions.
- No contract fees for short stay.
- No insurance costs.
- Secure Apartment
- Free bike rental
- Luggage storage
- English and Japanese support
- Responsive staff.



LOCALISATION

2-24-4 Kaname-cho, Toshima-ku

INTERESTED IN OUR APARTMENTS?

Do not hesitate to contact us

 03-5980-9621



tokyostay.co.jp@gmail.com



<https://www.facebook.com/tokyo.stay.1>